

# WICKED

## (WALES INTERVENTIONS AND CANCER KNOWLEDGE ABOUT EARLY DIAGNOSIS): THE DEVELOPMENT AND EVALUATION OF PRIMARY CARE INTERVENTIONS TO EXPEDITE THE DIAGNOSIS OF SYMPTOMATIC CANCER IN WALES

CI: Richard Neal

*Bangor University:*

NWCPCR: Clare Wilkinson (primary care trials), Ruth Lewis (evidence synthesis), Julia Hiscock (qualitative methods), Maggie Hendry (multi-methods, project management), Nefyn Williams (primary care trials, links with Health Board)

NWORTH: Paul Brocklehurst and Zoe Hoare (trial methodology and statistics)

CHEME: Rhiannon Tudor Edwards

School of Healthcare Sciences: Joanne Rycroft Malone

*Cardiff University:*

Kate Brain (Behaviour change / health psychology)

Andy Carson Stevens (patient safety)

Sunil Dolwani (gastroenterology/oncology)

*Other UK universities:*

Willie Hamilton (Exeter, cancer diagnostics, programme grant expertise)

Fiona Walter (Cambridge, cancer diagnostics, programme grant expertise)

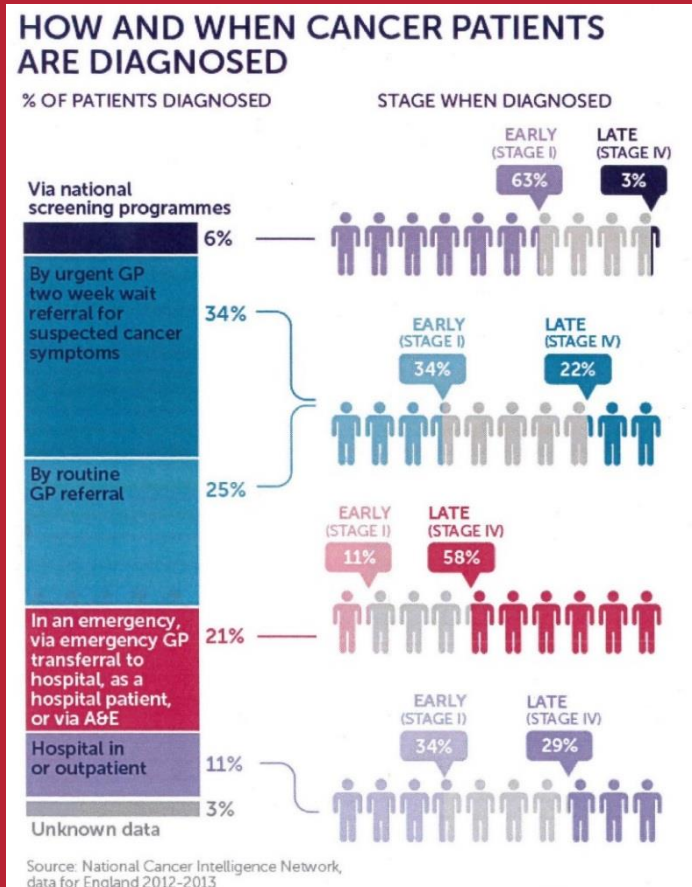
Greg Rubin (Durham, cancer tool implementation in general practice)

Georgios Lyratzopoulos (UCL, public health, epidemiology)

**Ca-PRI, 20 April 2017**

Presented by Andrei Stanciu

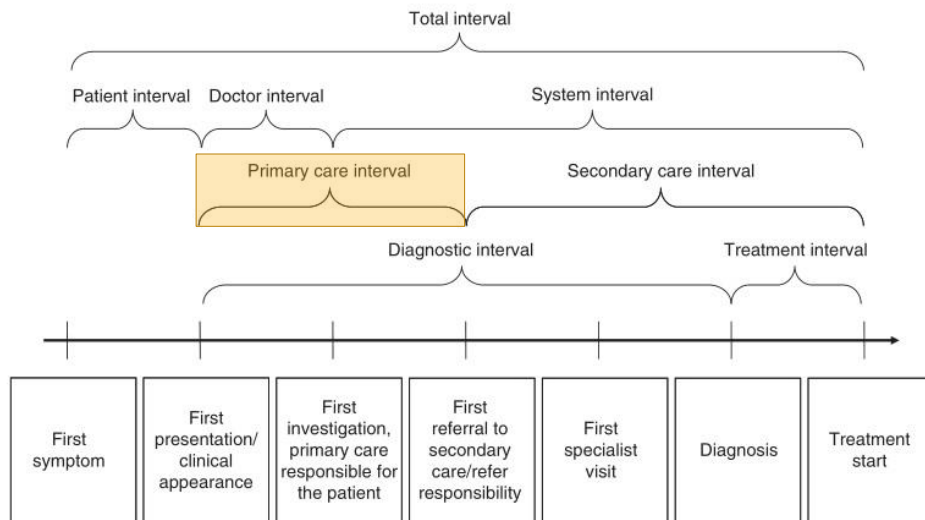
# Early CD/R in PC



- ~35% of all cancers are detected through urgent referrals
- ~10% of urgent suspected cancer referrals are diagnosed with cancer
- Practices with higher urgent referral rates associated with better survival

# WICKED Programme

**Aim:** develop and evaluate an intervention for GPs and their teams, with the intention of achieving prompter referral of suspected cancer and achieving earlier and cost-effective diagnosis of symptomatic cancer in Wales, thus improving survival



An illustration of the overall milestones and time intervals in the route from first symptom until start of treatment (Olesen *et al.*, 2009).

# WICKED Programme



PRIFYSGOL  
BANGOR  
UNIVERSITY

